

Covenant United Methodist Preschool

20301 Pleasant Ridge Drive, Montgomery Village, MD 20886
Office: 301-527-9300 FAX: # 301-926-7782
Certificate of Approval #09-15-3677 PEI License #23172
Tax EIN #52-1218205 www.covenantumpreschool.org
Email: Lisa.broadman@covenant-umc.org



...a fun place to
play and learn!

January 2020* Volume 23, Issue 5

Dear Covenant Preschool Families,

Happy 2020! May this year be one of blessings and joy for your family. The staff and I all feel our lives are so blessed by the gift of your children and families. We are looking forward to a wonderful rest of the school year!

Registration for the 2020-21 school year begins this month. Please remember as a current preschool family you have the opportunity to enroll your child first. You may drop off your registration packets (coming home soon in buckets) beginning **Wednesday, January 29**. If you have any questions about the class offerings next year or the registration process, please just ask – I am always here to help.

For the 2020-2021 school year, there is a slight change to the 3 year old schedule. The new 3 year old schedule is:

Tu/W/Th	9:15-1:15	\$350/month
Tu/Th/F	9:15-1:15	\$350/month
Optional 4 th day (W or F)		\$100/month

Our 4 year old PreK schedule will include a 3 day, 4 day or 5 day option. The 4 year old schedule is:

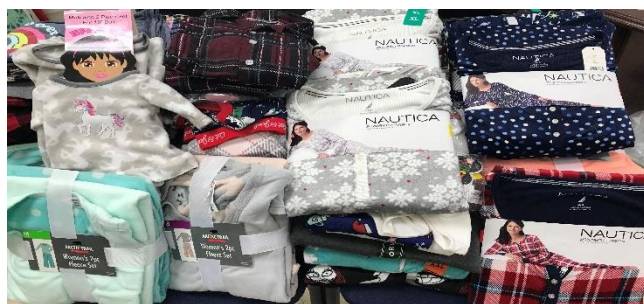
M/W/F	9:15-1:15	\$350/month
Tu/W/Th/F	9:15-1:15	\$450/month
Add a 5 th day (M)	9:15-1:15	\$100/month

Please share the good news of Covenant Preschool with your friends and neighbors! You are the best advertisement for our wonderful school and we really appreciate your enthusiastic

support. I am available to provide personal tours to interested families most any school day between 9:30-noon. During a visit, families will have the opportunity to see our classrooms, hear about our program and ask questions. A quick email to Lisa.broadman@covenant-umc.org is all that is needed to set up a preschool tour.

If you bring a NEW family to our school and they register their child for either the rest of this year or next school year, you will receive **10 percent off of your next month's tuition**. Please talk to anyone you know so that you can benefit from this great perk!

Thank you for your pajama donations! We received over 50 pairs of new pajamas that were donated to a shelter in Gaithersburg. Thank you for helping local children to sleep better and thank you for helping us to teach our children how good it feels to give to and to do for others.



Please remember in these winter months to send your children to school with heavy coats, hats and mittens that are labeled with his/her name. We take the children outside to enjoy the playground whenever possible.

Enjoy a wonderful January and Blessings,

Lisa Broadman

CURRICULUM:

The Pre-K classes will be going into greater depth and detail than our three-year-old children. All students cover subject areas unless noted.

Social Studies

- A. New Year's Day
- B. Martin Luther King, Jr.
- C. Feelings (3s)

English-Language Arts

- A. Storybook Units
- B. Opposites
- C. Fine Motor Skills
- D. Rhyming (Pre-K)
- E. Weekly Readers (Pre-K)
- F. Letters & Phonics - M, N, O & P (Pre-K)
- G. Name Recognition (Pre-K)
- H. Manuscript - (Pre-K)

Science

- A. Season-Winter
Environment Changes
Proper Clothing
Snow/Snowflakes



- B. Temperature/Thermometer
- C. Color Paddles
- D. Hibernation (Pre-K)
- E. Migration (Pre-K)
- F. Freeze/Melt Experiments (PreK)
- G. Me and My World (T-F PreK)
 - 1. Air
 - 2. Water-Absorption,
Condensation, Evaporation

Social Emotional:

- A. Social Awareness

Math

- A. Colors & 4 Basic Shapes (3s)
- B. Numeral Recognition 0 - 10 (3s)
- C. Introduce Star, Diamond, Heart, Oval (3s)

- D. Calendar Introduction (3s)
- E. Numeral Recognition 0-20 (Pre-K)
- F. Review Basic & Complex Shapes (Pre-K)
- G. Counting 0-20 (Pre-K)
- H. Graphs - Picture & Bar (Pre-K)
- I. Classification by Size, Weight & Shape (Pre-K)
- J. Home Telephone Number (Pre-K)

Spiritual

- A. Epiphany
- B. Jesus' Miracles

FALL 2020 REGISTRATION:

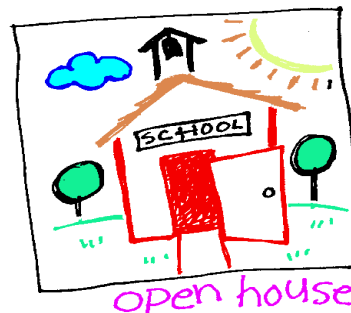
Registration for the Fall 2020 preschool classes will begin on **Wednesday, Jan 29th** for currently enrolled families, Terrific Twos families, Covenant Church members and alumni. Registrations will be collected in the preschool office when you arrive.

Community Registration for families new to our school will begin Wednesday, February 5th at 9:30 am.



OPEN HOUSE:

There will be an Open House for new families or current families who are interested in meeting the teachers and seeing their rooms. The Open House will be Saturday, January 25th from 9:00 – 11:00 am.



TEACHER CONFERENCES:

The Parent Teacher Conferences will be held in February. There will be 2 conference days per class. Be on the look out for Teacher sign ups for these later this month or the beginning of next month. Remember – these conferences will focus on your child’s academic progress and recommendations for improvement, if necessary.



SNOW POLICY:

Covenant United Methodist Preschool follows the Montgomery County Public School (MCPS) calendar as far as snow closings. The school will be closed on all MCPS snow days.

On delayed openings days, our preschool will ALWAYS open at 10:15 AM. If MCPS has an early dismissal due to weather conditions the preschool closes at 11:45 am.

Do you receive weather alerts from MCPS regarding school closings or delayed openings? This is helpful even if you do not have children in the school system because we follow MCPS decisions here at CUMP. You can receive alerts via text or email at: www.montgomeryschoolsmd.org/emergency/alertsmcps.aspx.



REMINDER:

Covenant Preschool will be closed Monday, January 18th for the Martin Luther King, Jr. Holiday.



FACEBOOK AND YELP REVIEWS:

Have you liked our Facebook page yet? A like for our FB page and a positive review could be a great way for new families to hear about our wonderful program. Plus, the weekly pictures are entertaining and fun!

The Preschool also has a Yelp Presence. Please consider providing a review for us so that when prospective families are looking for a preschool, they will consider us.



EPIPHANY: Merriam-Webster Dictionary says, “January 8 observed as a church festival in commemoration of the coming of the Magi (three wise men) to see Jesus in Bethlehem”.



Meet the Director!

Mrs. Broadman

Contact: Lisa.broadman@covenant-umc.org



My Education!

I graduated from Gaithersburg High School. I received a BA in Business from University of South Florida. I received an MBA from the University of Maryland.



Go Bulls!

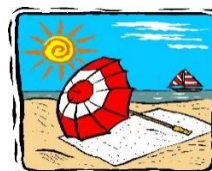


Go Terps!

The Basics!

I live in Gaithersburg with my husband and two sons. I grew up in Montgomery Village and graduated from the high school where my sons have gone. I have one son in college and I am getting ready to send my last son off to college as well. I am excited for them but struggling with them leaving. ☹️

I love to read and I absolutely love the beach. Any time I have the opportunity to be near water, I take it! 😊



My Favorites!

Food: Seafood

Color: Red

Movie: Cars and Dirty Dancing

Drink: Flavored seltzers and wine

Sports: MD football and basketball, GHS lacrosse, Dallas Cowboys

Restaurant: Bonefish Grill

Dessert: Brownies & Cookies

Candy: Milk Chocolate Lindt Truffles

Snack: Popcorn and Chex Mix

Flower: Tulips

